

### Specifications

Models	Z-45XC	
Measurements	Metric	US
Working height maximum*	15.91 m	51 ft 7 in
Platform height maximum	13.91 m	45 ft 7 in
Horizontal reach maximum	7.55 m	24 ft 9 in
Up and over clearance maximum	7.30 m	23 ft 11 in
<b>A</b> Platform length	0.76 m	2 ft 6 in
<b>B</b> Platform width	1.83 m	6 ft
<b>C</b> Height - stowed	2.25 m	7 ft 4 in
<b>D</b> Length - stowed	6.66 m	21 ft 10 in
<b>E</b> Width	2.29 m	7 ft 6 in
<b>F</b> Wheelbase	2.03 m	6 ft 8 in
<b>G</b> Ground clearance - center	0.37 m	1 ft 2.5 in

### Productivity

Lift capacity	300/454 kg	660/1,000 lbs
Platform rotation	160°	160°
Vertical jib rotation	135°	135°
Turntable rotation	355° non-continuous	
Turntable tailswing	zero	zero
Drive speed - stowed	7.24 km/h	4.5 mph
Drive speed - raised**	1.0 km/h	0.61 mph
Gradeability - 4WD - stowed***	45%	45%
Turning radius - inside	1.68 m	5 ft 6 in
Turning radius - outside	4.50 m	14 ft 9 in
Controls	12V DC proportional	
Tyres	315/55 D20	

### Power

Power source	Deutz D2011L03i 3-cylinder diesel 35.8 kW (48 hp)	
Auxiliary power unit	12V DC	12V DC
Hydraulic tank capacity	83 L	22 gal
Fuel tank capacity	64.4 L	17 gal

### Sound & Vibration Levels

Sound pressure level (ground workstation)	87 dBA	87 dBA
Sound pressure level (platform workstation)	82 dBA	82 dBA
Vibration	<2.5 m/s <sup>2</sup>	<8 ft 2 in/s <sup>2</sup>

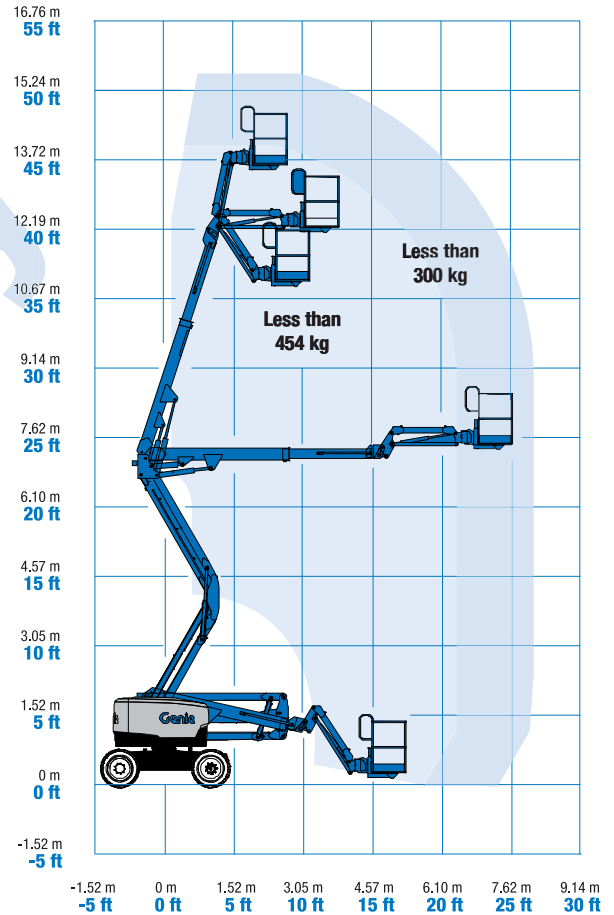
### Weight\*\*\*\*

CE 4WD (foam filled tyres)	6,900 kg	15,212 lbs
----------------------------	----------	------------

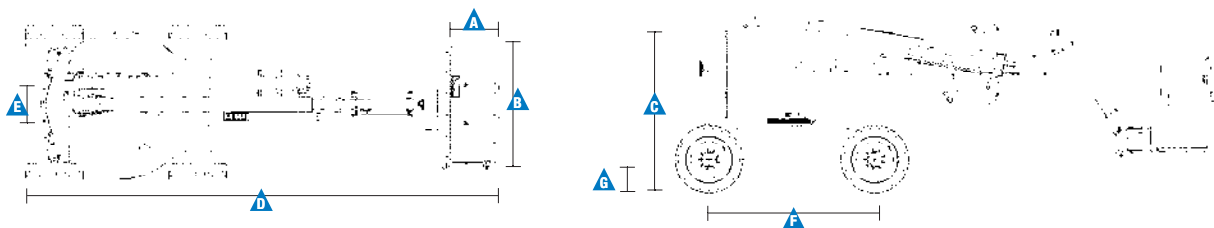
### Standards Compliance

EU Directives: 2006/42/EC - Machinery (harmonized standard EN280:2013); 2004/108/EC (EMC); 2000/14/EC (Outdoor Noise)

### Range Of Motion Z-45XC



\* The metric equivalent of working height adds 2 m to platform height. U.S. adds 6 ft to platform height.  
 \*\* In lift mode (platform raised), the machine is designed to operate on firm, level surfaces only.  
 \*\*\* Gradeability applies to driving on slopes. See operator's manual for details regarding slope ratings.  
 \*\*\*\* Weight will vary depending on options and/or country standards.



# Self-Propelled Articulating Booms

## Z™-45XC

### Features

Standard Features	Easily Configured To Meet Your Needs	Options & Accessories
<p><b>Measurements</b></p> <p><b>Z-45XC</b></p> <ul style="list-style-type: none"> <li>• 15.91 m (ft in) working height</li> <li>• 7.55 m ( ft in) horizontal reach</li> <li>• 7.30 m (ft in) up and over clearance</li> <li>• Unrestricted lift capacity of 300 kg (660 lb) with restricted envelope of 454 kg (1,000 lb)</li> </ul> <p><b>Productivity</b></p> <ul style="list-style-type: none"> <li>• Self-levelling platform</li> <li>• Hydraulic platform rotation</li> <li>• Proportional joystick controls</li> <li>• Telematics-Ready Connector</li> <li>• Thumb rocker steering</li> <li>• Drive enable</li> <li>• AC power cord to platform</li> <li>• Horn</li> <li>• Hour meter</li> <li>• Tilt alarm</li> <li>• Descent &amp; travel alarms</li> <li>• Flashing beacon</li> <li>• 355° non-continuous turntable rotation</li> <li>• Positive traction drive</li> <li>• Two speed wheel motors</li> <li>• Certified load sensor</li> </ul> <p><b>Power</b></p> <ul style="list-style-type: none"> <li>• 12 V DC auxiliary power</li> <li>• Engine protection package</li> <li>• Deutz intake air heater</li> <li>• Swing out engine tray</li> </ul>	<p><b>Platform Options</b></p> <ul style="list-style-type: none"> <li>• Steel 1.83 m (6 ft) dual-entry (standard)</li> </ul> <p><b>Jib Options</b></p> <ul style="list-style-type: none"> <li>• Articulating 1.52 m (5 ft) jib boom</li> </ul> <p><b>Power Options</b></p> <ul style="list-style-type: none"> <li>• Deutz diesel 35.8 kW (48 hp)</li> </ul> <p><b>Drive Options</b></p> <ul style="list-style-type: none"> <li>• 4 x 4</li> </ul> <p><b>Axle Options</b></p> <ul style="list-style-type: none"> <li>• Active oscillation</li> </ul> <p><b>Tyre Options</b></p> <ul style="list-style-type: none"> <li>• Rough terrain foam-filled</li> <li>• Rough terrain non-marking foam-filled</li> </ul>	<p><b>Productivity</b></p> <ul style="list-style-type: none"> <li>• Platform top auxiliary rail</li> <li>• Air line to platform</li> <li>• Power to platform (incl. plug, socket and ground fault interrupt leakage on request)</li> <li>• Work lights package (2 on chassis, 2 on platform)</li> <li>• Biodegradable hydraulic oil</li> <li>• Tilt cut-out option</li> <li>• Track &amp; Trace <sup>(2)</sup> (GPS unit providing machine location &amp; operating information)</li> <li>• Track &amp; Trace Smart ID</li> <li>• Panel cradle package <sup>(1)</sup></li> <li>• Lockable platform control box cover</li> <li>• Tool tray</li> <li>• Operator Protective Structure</li> <li>• Operator Protective Alarm</li> <li>• Keypad unlocking device</li> </ul> <p><b>Power</b></p> <ul style="list-style-type: none"> <li>• Diesel catalytic scrubber muffler with spark arrestor</li> <li>• Engine gauge package (oil pressure &amp; temperature)</li> <li>• AC hydraulic generator packages (110V/50Hz - 220V/50Hz, 2200W)</li> <li>• Low temperature cut-out module</li> <li>• Engine heater option <sup>(3)</sup></li> <li>• Refinery kit with spark arrestor and electric or mechanical Chalmers valve <sup>(3)</sup></li> </ul>



- <sup>(1)</sup> Factory-fit option only  
<sup>(2)</sup> Includes a first 2 years subscription  
<sup>(3)</sup> Available with Deutz engine only  
<sup>(4)</sup> Reduces platform load capacity to 440 lbs

08/16 Part No. B109356UK

### United Kingdom

The Maltings, Wharf Road, Grantham NG31 6BH, T: +44 800 988 3739 (toll free), Fax +44 (0)1476 584334, Email AWP-InfoEurope@terex.com  
 Visit [www.genielift.co.uk/locations](http://www.genielift.co.uk/locations) to view our global locations list.

### Worldwide Manufacturing And Distribution

Australia · Brazil · Caribbean · Central America · China · France · Germany · Italy · Japan · Korea · Mexico · Russia · Southeast Asia · Spain · Sweden · United Arab Emirates · United Kingdom · United States

Product specifications and prices are subject to change without notice or obligation. The photographs and/or drawings in this document are for illustrative purposes only. Refer to the appropriate Operator's Manual for instructions on the proper use of this equipment. Failure to follow the appropriate Operator's Manual when using our equipment or to otherwise act irresponsibly may result in serious injury or death. The only warranty applicable to our equipment is the standard written warranty applicable to the particular product and sale and we make no other warranty, express or implied. Products and services listed may be trademarks, service marks or trade names of Terex Corporation and/or their subsidiaries in the USA and many other countries. Genie is a registered trademark of Terex South Dakota, Inc. © 2016 Terex Corporation.

