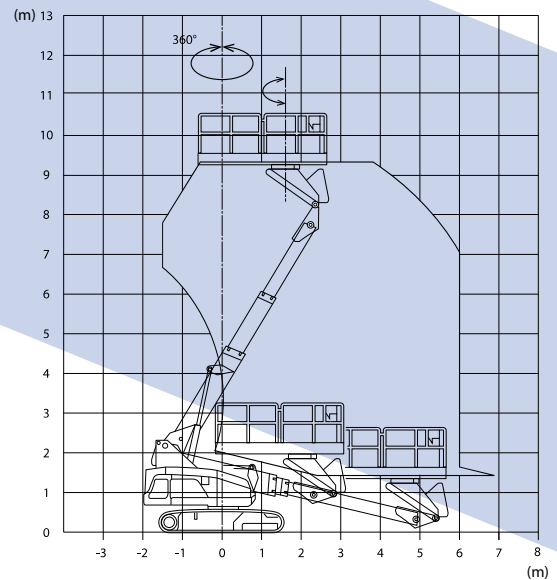


## → Nagano Z11Auj

### High capacity telescopic crawler boom

The Z11Auj boasts an extra large platform basket which makes it perfect for tunnel works.

MODEL	Z11Auj
Maximum moveable load	600 kg
Tilt	5°
Platform dimensions (W x L x H)	3,15 x 2,05 x 1,10 m
Max. platform height	9,38 m
Max. horizontal reach	6 m
Machine weight	9140 kg
Overall length	7,62 m
Overall width	2,25 m
Overall height	2,72 m
Engine model	Kubota D1305
Travel speed	0,8 / 1,0 / 1,5 / 2,5 km/h



### STANDARD FEATURES

- ✓ Fire resistant coating
- ✓ Easy cleaning
- ✓ Easy access to filters
- ✓ Oscillating roller
- ✓ Secondary guarding
- ✓ Maintenance cover



Max platform height: **9 m**  
Max working height: **11 m**  
Max moveable load: **600 kg**