

SPECIFICATIONS

Size	Metric	British
Max. Working Height A	19.00m	62ft 4in
Max. Platform Height B	17.00m	55ft 9in
Overall Length C	4.46m	14ft 8in
Overall Width D	2.29m	7ft 6in
Overall Height(Rails Up) E	3.60m	11ft 10in
Overall Height(Rails Down) F	2.75m	9ft
Platform Size(Length×Width)	4.06m×2.00m	13ft 4in×6ft 7in
Platform Extension Size G	2.00m	6ft 7in
Ground Clearance	0.40m	1ft 4in
Wheelbase H	2.85m	9ft 4in
Turning Radius(Inside/Outside)	1.00m/3.20m	3ft 3in/10ft 6in
Tyres	33×12-20	33×12-20

Performance

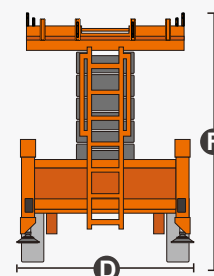
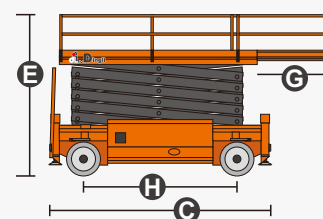
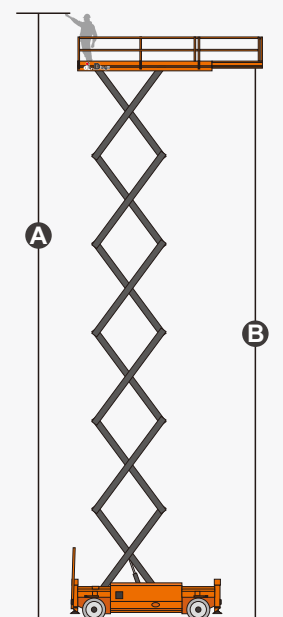
S.W.L	680kg	1499lb
S.W.L On Extension	680kg	1499lb
Max. Occupants	4	4
Gradeability	40%	40%
Travel Speed(Stowed)	4.5km/h	2.80mph
Travel Speed(Raised)	0.6km/h	0.37mph
Max. Working Slope	X-2°/Y-3°	X-2°/Y-3°
Up/Down Speed	70/70sec	70/70sec

Weight

Overall Weight	10530kg	23214lb
----------------	---------	---------

Power

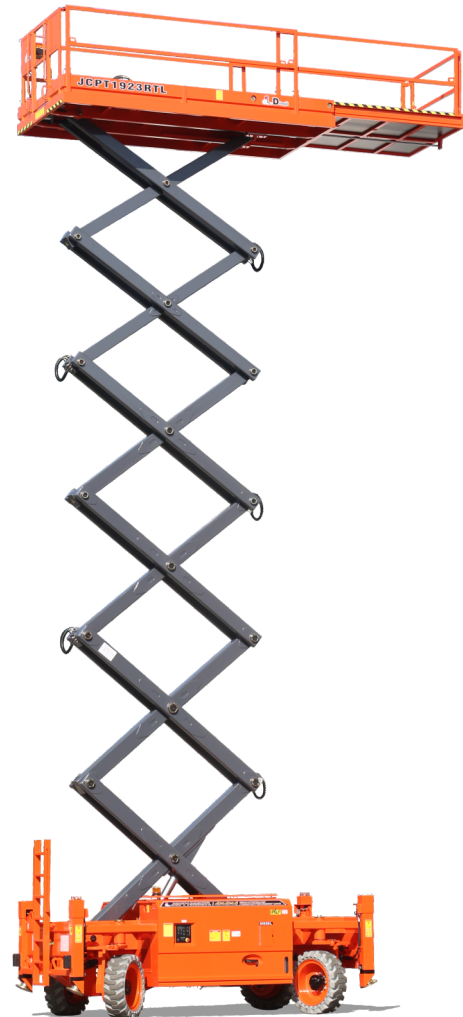
Diesel Engine	Deutz TD2.9 L4/36.4kW	Deutz TD2.9 L4/36.4kW
Diesel Tank	100L	26gal
Hydraulic Tank	135L	35gal



FEATURES

Standard Items

- Proportional Joystick Controls
- Self-Locking Gates
- Automatic One-Way Platform Extension Deck
- Four-Wheel Drive
- Four-Wheel Steering
- Automatic Braking System
- Self-Weight Lowering System
- Tubing Explosion-Proof System
- Onboard Fault Diagnostic System
- Tilt Alarm
- Motion Alarm
- Horn
- Hour Meter
- Hydraulic Oil Cooling System
- Flashing LED Beacon
- Foldable Guard Rails
- Drive Enable
- Manual Brake Release
- Lanyard Attachment Point
- Tie-Down And Lifting Points
- Automatic Leveling Hydraulic Outriggers
- Anti-Restart Engine Protection
- Emergency Pump
- Emergency Stop Button
- Platform Load Sense System
- Drivable At Full Height



ZHEJIANG DINGLI MACHINERY CO., LTD.

Address: No.188 Qihang Road, Deqing, Zhejiang P.R.C 313219

Telephone: +86(572)8681688

E-Mail: export@cndingli.com

[Https://en.cndingli.com](https://en.cndingli.com)